

Update: 2023-03-01

Technical Director: Nicolas Hoste - [nico@le-fil.com](mailto:nico@le-fil.com) 06 42 10 84 23  
Stage Manager: Alain Marques - [alain@le-fil.com](mailto:alain@le-fil.com) 06 30 69 25 98

### STAGE TOTAL SPACE 19 m x 9 m

Clearance opening .....	12 m
Stage Hight .....	1,10 m
Proscenium at the axe .....	3,60 x 1,30 m
Hight under roof .....	9 m
Max high truss .....	5,80 m
Max high up cliff hanging .....	6,40 m
Monitor desk stage left	
Dimmers light power are placed on the gate way	
Load-out stock area back stage .....	77 m <sup>2</sup>



### ROOM

20 m large by 18,50 m deep (Bench in closed position)

Movable bench.....10 rows/ level

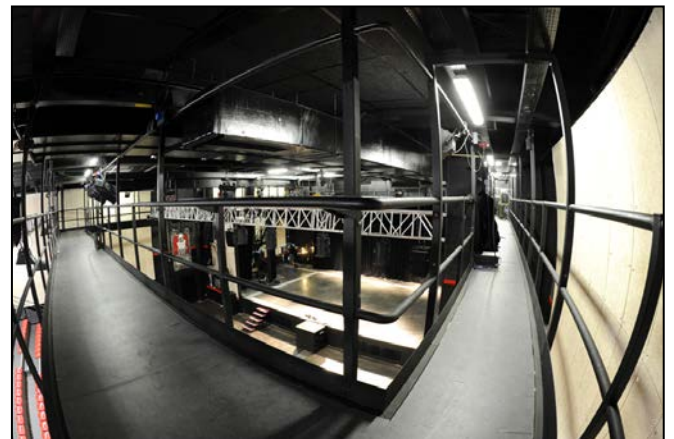
Plastic seats.....264 seats

Crash barriers.....8 mètres

Access by loading deck at stage level 1m10 / Clearance high 2,04 m and width 1,75 m

Access by safety exit public level / Clearance high 2,12 m and width 2,30 m

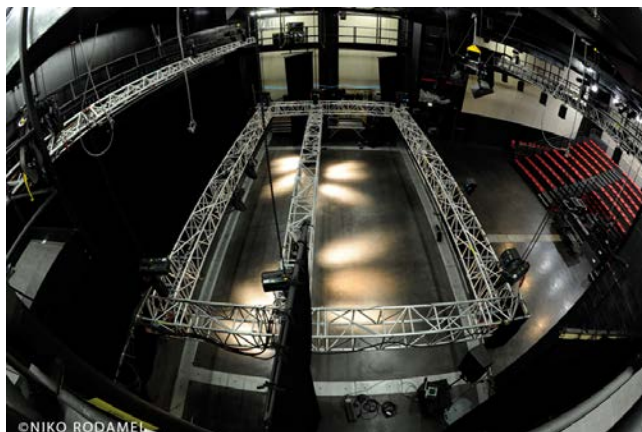
Access by main entrance public level / Clearance high 2,20 m and width 1,75 m



Technical gateway started by stairs, at stage right, running to the room, and finishing at stage left.

# TECHNICAL EQUIPEMENTS

- 10 riser 2 m x 1 m max high 1 m (by 20 cm steps) (much if necessary)
- 8 rolling brackets for risers 2 m x 1 m
- 4 stands manfrotto Win-up with wheels, 3,70m maxi
- 4 legs drops / curtains of 4 m x 4,70 m night occultation 150 g
- 2 Legs drops / curtains of 3 m x 4,70 m night occultation 150 g
- 2 legs drops light/ curtains for video screen of 3 m x 5,70 m & 2 of 4 m x 4,70 m
- 1 leg drop / curtain, to change the capacity 20 m x 10 m in 3 parts.
  
- 1 Furling Video screen by 7 m x 4 m
- 1 Vidéo projecteur Digital projection E-vision13500Lumens optique large (112-500) - 1,25-1,79 : 1 and zoom (112-502) - 2,22-3,67 :1
- 1 Intercom central 2 channels Clear-Com MS 232
- 6 Clear-Com S 501 set
- 6 Head phone MB Quart K800E (1 ear)
  
- Aluminium truss of 500 cm, square type, MASH model, (*permanently set, picture under neath*)
  - 17 set of 2,80 m
  - 2 set of 1,40 m
  - 6 set of 0,70 m
  - 8 angles set in T
  
- Stell truss 300 cm triangle section  
Using generally for backdroop or curtains and/or screen
- Steel truss 300 cm triangle section  
12 meters (free use)
  
- 12 liftket 1 ton and remote
- 5 liftket 500 kg for far truss
  
- 1 personal elevated plateform  
Genie Express S 25 de type 1A ;  
9,50m max working high
- 1 x 3 parts lader  
max Hight 6,15m
- 1 Lift truck 1.2 T
  
- 1 MaxxBCL Waves on master mix
- 1 system for measuring / limiting AMIX SNA 50 calibrated at 103 dB under law
- 1 network Broadcast only for Numsound Intranet RJ4-5, CAT6A certified at 350 MHz



# SOUND

## 1 PA from D&B including :

8 Q1, 6 Q-Sub, 2 B2, 2 Q10, 3 T10, 2 E6, 4 D40, 1 mac Mini, 1 logiciel ROPE V3

## 1 PA Mixing kit including :

- 1 CL5 + 1 MY8 ADDA
- 1 RIO32 + 2R18 up to 48 in and 32 out
- 1 DN 360
- 1 CD player CDRW900 Tascam

### *Optional Analogic insert*

- 2 *Dbx160*
- 1 *Avalon VT737*
- 2 *Distressor EL8X*
- 2 *DS 201*
- 4 *DL 241*
- 1 *DPR 901 II*
- 1 *PCM 96*
- 1 *M3000*
- 1 *D Two*
- 1 *SPX 2000*
- 1 *NTI Acoustilyser*



## 1 Stage kit wedges from D&B including:

- 8 Wedges M4, 4 Max 15, 7 D12
- 1 Q-SUB
- Sides Fill with 2 Q7, 2 Q-Sub, 2 D12

## 1 monitor desk including:

1 M7CL Yamaha, 1 nanoclock Rosendahl

## 1 microphone set including:

- 8 Sm 58
- 2 Beta 58 A
- 1 Beta 87 A
- 1 Audix OM 6
- 5 Sm 57
- 1 Beta 56 A
- 1 Beta 57 A
- 2 609 Sennheiser
- 5 604 Sennheiser
- 2 Sm 81
- 2 RE 200 EV
- 2 AT 2031 Audio Technica
- 4 ADX51 Audix
- 1 614 Sennheiser
- 1 C451 AKG
- 2 Beta 98 A
- 2 Beta 91
- 1 Beta 52
- 3 1 RE 20 EV



[www.le-fil.com](http://www.le-fil.com)

- 1 D6 Audix
- 2 521 Sennheiser
- 2 Wireless receiver HF Shure Quad ULXD ( total 8 channels)
- 6 Wireless receiver HF Shure U2 ULXD
- 2 Belt pocket Pocket Shure U1 ULXD
- 6 Mic Head Beta 58A
- 4 Mic head sm 58
- 4 Mic head Beta 87 A
- 2 Head set mic Shure WH20
- 12 DI BSS AR 133
- 6 Di Radial J48
- 20 High boom stand K&M
- 20 Low boom stands K&M
- 2 High straight stands with round basement
- 1 Set of wires

#### Miscellaneous

- Multicore 40 IN/ 16 Out
- Active patch 40 IN LA audio MS 1224
- Network Broadcast CAT6A
- 1 AES wire stereo from desk to rack amp

# LIGHTING

## Desk

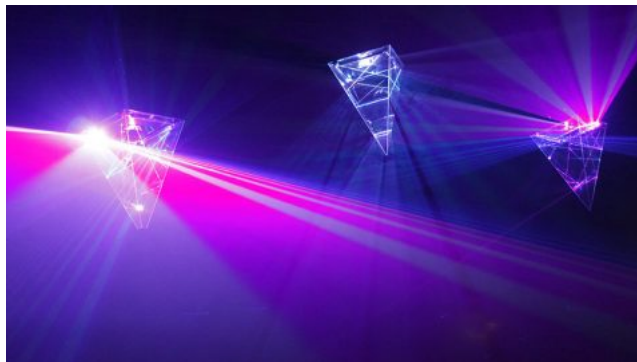
- 1 MA Lighting 48/96
- 1 Grand Ma 2 Light *Soft version: 3.9.60.3*
- 1 FOG MDF

## Dimmers

- 4 dimmer 12 x 3 KW RVE (stage gate way stage)
- 3 dimmer 6 X 3 KW RVE (Room gate way)
- 1 dimmer 12 x 3 VMB (Stage left floor )
- 1 Dimmer 12 x 3 RVE (Stage left floor)

## Projecteurs

- 12 CLAY PAKY AXCOR 400 Spot
- 16 Robin 600 Led Wash
- 2 IVL Pyramides – Carré Laser 10 watts – Minuit Une
- 4 Bars de 6 PAR 64
- 4 Bars de 4 PAR 64
- 30 PAR 64 Solo (VN,N W)
- 12 PAR 56 short
- 12 PAR 20 230 V
- 19 Single lens 1 KW Robert Juliat
- 4 Single lens Robert Juliat avec volet et lentille
- 8 Single lens 2 KW ADB C 201 / 5°-65 ° avec Volet
- 8 Profile 2 Kw ADB DS 205/ 13°-36°
- 8 Profile 1KW 614 sx Robert Juliat
- 5 Profile 1 KW 613 sx Robert Juliat
- 6 1/2 Série ACL
- 4 Load Par 110 Volt
- 10 Cyclorama fixture 1 KW asymétrique ADB
- 4 Atomic 3000
- 14 Blinders 1300 W basse tension
- 10 Sunstripe
- 4 Slide load filter for single lens 2 KW of 20 colors



## referenced filters available

### Lee Filters

008 – 015 – 017 – 019 – 022 – 026 – 027 – 068 – 071 – 089 – 100 – 101 – 105 – 106 – 113 – 116 – 119 – 120 – 121 – 124 – 126 – 132 – 134 – 135 – 137 – 139 – 143 – 151 – 153 – 156 – 158 – 161 – 164 – 179 – 180 – 181 – 195 – 200 – 201 – 202 – 204 – 205 – 219 – 228 – 237 – 343 – 345

### Rosco

114

## Control

- Broadcast network RJ45, CAT6A – 350Mhz
- 1Artnet/Nod on stage right / 8 DMX out DMX (ref: Luminex [Ethernet-DMX8 MkII](#))

**Adresse IP : 2.0.0.250 et 2.0.0.251**

Conventionally : Univers 1 : TRAD / Univers 2 et 3 : truss and stage auto / Univers 4 et 5 : stage  
Univers 6, 7 et 8 : free.

- Un nod /Artnet 8 univers DMX free and suitable (ref: Luminex [Ethernet-DMX8 MkII](#))

**Adresse IP : 2.0.0.240 et 2.0.0.241**

## VIDEO

The room is set with an intranet Broadcast network in CAT6A.

Certified at 350 Mhz, it's available for sound, light, and video. For video, a gear of Kramer brand product allow to send and receive video flux at fullHD standard.

## DRESSING ROOM

### WIFI Network : Le fil Guest

### Pasword: @guestlefil

#### 1 Open space for production set with

1 desk

Wifi & internet access

#### 1 Master dressing room 16,5 m<sup>2</sup> with

2 washballs, mirror, toilettes, showers

Tables, couch, chairs, fridge

Locked code door

#### 3 Dressing room 9 m<sup>2</sup> with

1 Wash ball, shower, couch, table, chairs, mirror, fridge

Locked code door

#### 1 Lobby with

Couchs, chairs, tables

monitoring video - TV

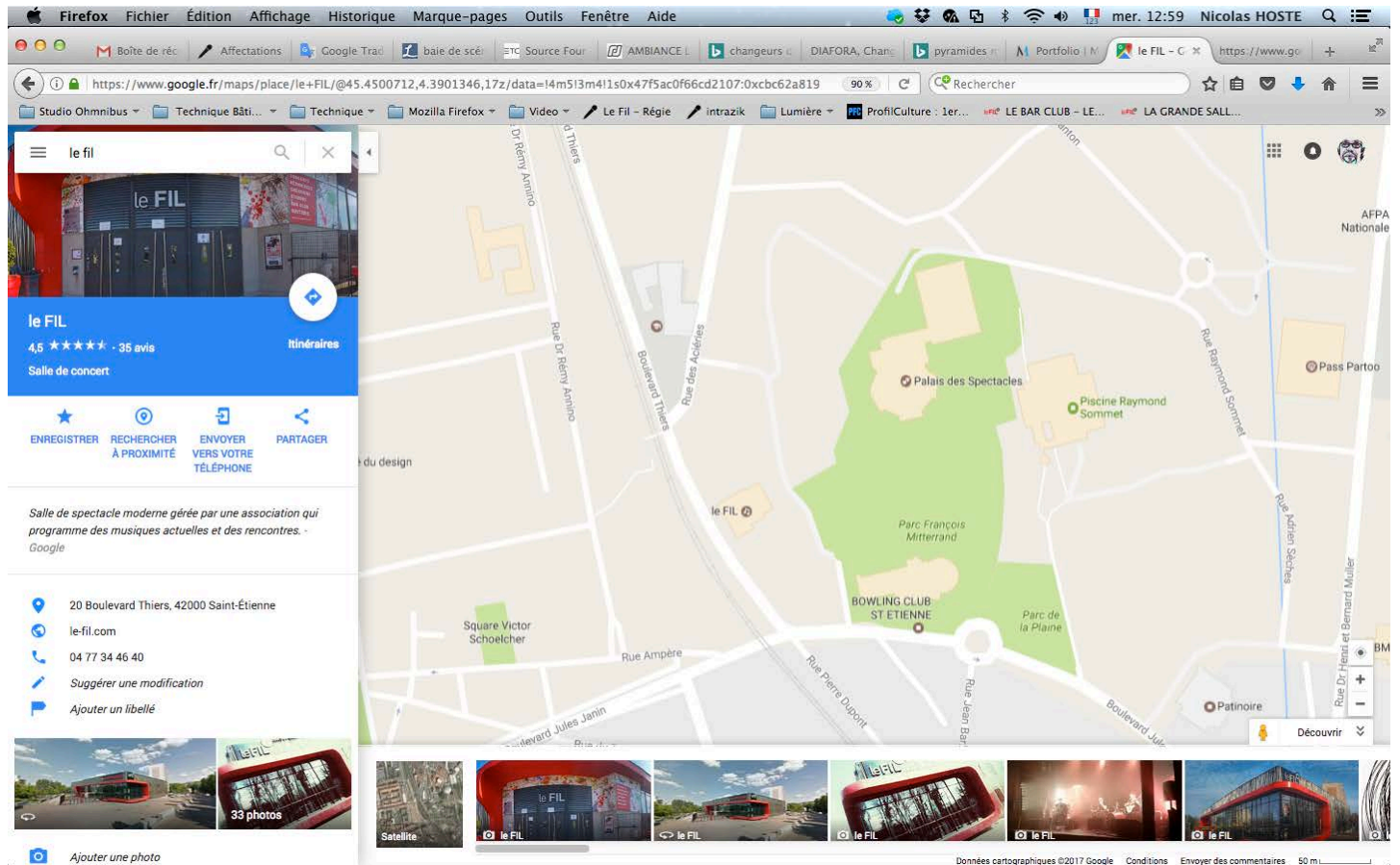
#### 1 Catering

24 Pax - TV



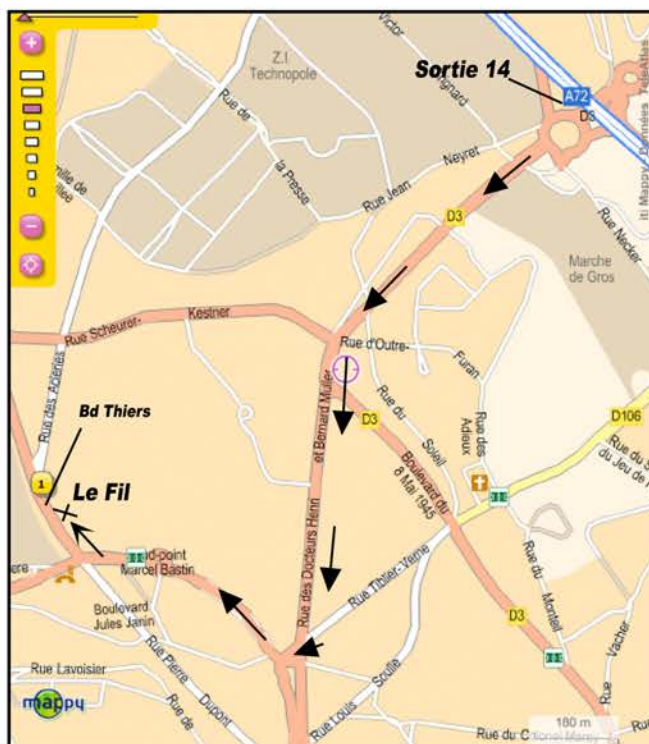
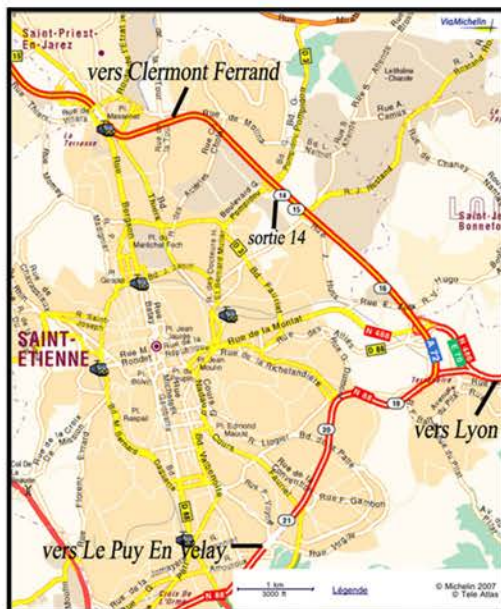
# Location

<https://www.google.fr/maps/place/le+FIL/@45.4499391,4.3885355,17z/data=!3m1!4b!4m5!3m4!1s0x47f5ac0f66cd2107:0xcbc62a819c78387d!8m2!3d45.4499391!4d4.3907242>



## PLAN D'ACCÈS

LE FIL - 20 BD THIERS - PLAINE ACHILLE - 42000 ST ETIENNE  
(GPS : à proximité du 4 rue des Acieries)  
A72 - sortie 14



NB : ne pas suivre le fléchage "Parking Fil" = parking public éloigné de la salle