



# Tech Specs – Club (102dB max)

Update: 7 October 2019

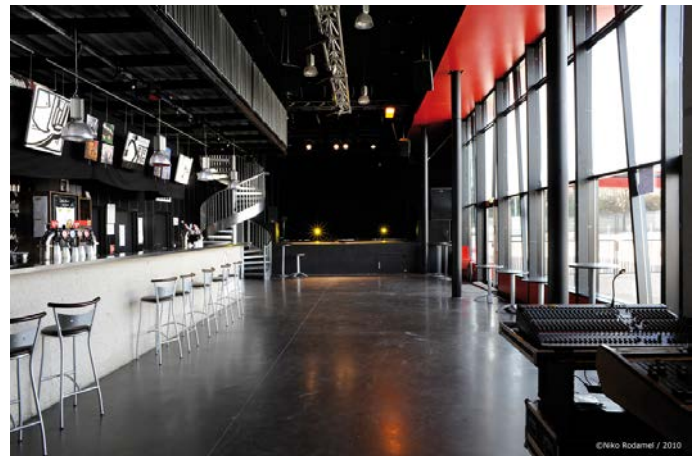
Technical Director: Nicolas Hoste - [nico@le-fil.com](mailto:nico@le-fil.com) - + 33 4 77 34 46 42 - + 33 6 42 10 84 23  
Stage Manager: Alain Marques - [alain@le-fil.com](mailto:alain@le-fil.com) + 33 6 30 69 25 98

## STAGE TOTAL SPACE 8 m x 6 m

Clearance opening ..... 6 m  
Stage Height ..... 1,10 m  
Height under roof ..... 5,20 m  
Max high truss ..... 4,50 m  
Max high up cliff hanging ..... 4,80 m  
Monitor desk stage right (in option)  
Dimmers light power are placed on mezzanine  
Load-out stock area back stage ..... 77 m<sup>2</sup>

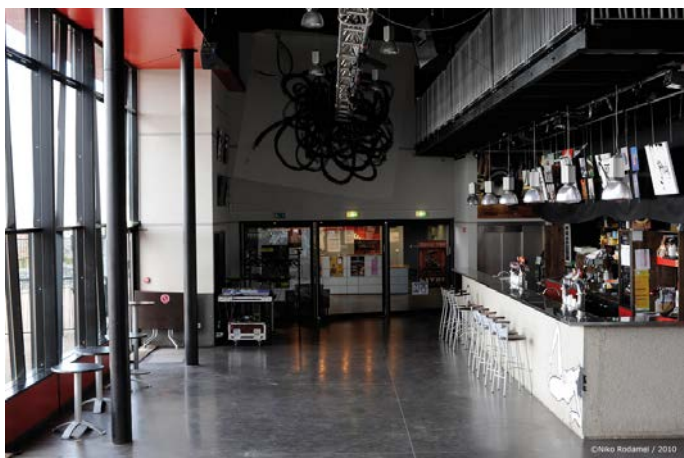
## ROOM

8 m wide by 17 m deep  
Bar in the room a long stage right



## STAGE EQUIPEMENTS

- 1 Rolling black curtain for the stage windows
- 1 Rolling black curtain for the room windows
- 1 Moving square of 300 mm de 4,8 x 4,8 m
- 3 Tubes on the square + 1 middle Tube
- 1 fixed tube for the front light
- 1 Moving truss of 300 mm in the axial room (12 m long)
- A lot of riser



[www.le-fil.com](http://www.le-fil.com)

# SOUND

## 1 PA and monitoring from D&B including:

4 Sub C7, 2 C7, 2 E8, 2 E12 (in the room delay), 2 D80  
8 max 15, 1 D80

## 1 mixing gear with :

1 CL5 + RI/O 32/24 D + 2 RI 8 D  
1 DN 9848 (delay compression)  
3 DN 360 Klark Technic  
1 Lecteur CD / K7 Tascam AD 500  
1 Lecteur / enregistreur Tascam MD 301 MKII

## 1 microphone set including:

8 Sm 58  
2 Beta 58 A  
1 Beta 87 A  
1 Audix OM 6  
5 Sm 57  
1 Beta 56 A  
1 Beta 57 A  
2 609 Sennheiser  
5 604 Sennheiser  
2 Sm 81  
2 RE 200 EV  
2 AT 2031 Audio Technica  
4 ADX51 Audix  
1 614 Sennheiser  
1 C451 AKG  
2 Beta 98 A  
2 Beta 91  
1 Beta 52  
1 RE 20 EV  
1 D6 Audix  
2 521 Sennheiser  
2 Wireless receiver HF Shure Quad ULXD ( total 8 channels)  
6 Wireless receiver HF Shure U2 ULXD  
2 Belt pocket Pocket Shure U1 ULXD  
6 Mic Head Beta 58A  
4 Mic head sm 58  
4 Mic head Beta 87 A  
2 Head set mic Shure WH20  
12 DI BSS AR 133  
6 Di Radial J48

## Miscellaneous

Multicore 32 IN/ 12 Out  
Active patch 40 IN LA audio MS 1224 ( if needed in case of recording)  
Network Broadcast CAT6A

# LIGHTING

## Desk

- 1 Grand MA 1 Full Size
- 1 Light Co 24/48

## Dimmers

- 24 circuits for the square
- 12 circuits for the floor
- 6 circuits for the room and the front

## Projectors at the square

- 2 1/2 Serie D'ACL + PAR 110v
- 9 PAR 64 CP 60
- 4 PAR 64 CP 62
- 4 PC 1 KW Juliat
- 6 Spot Robe 700 EAT (mode 1/36ch)
- 2 Découpe Led ETC Lustr 2
- 4 Ayrton Versapix 12ch
- 8 PAR Rush II (Mode 9 ch)
- 3 FL1300
- 1 Smoke Antari HZ500

It's a permanent light design for the running year, wherever it's possible to set additional light at the floor,  
The light plot is here: <https://www.le-fil.com/le-fil/le-lieu/>  
Gear free for the floor: 2 Spot Robe 700EAT // 4 PAR Rush II // Trad: PAR, PC, Profiles, ACL...

# VIDEO

The room his set with an intranet Broadcast network in CAT6A.

Certified at 350 Mhz, it's available for sound, light, and video. For video, a gear of Kramer brand product allow to send and receive video flux at full HD standard.

1 Screen on motor of 4m x 3 m + 1 Video projector SANYO PLT X 35 de 4000 Lumens

# DRESSING ROOMS

3

---

Licences entrepreneur du spectacle  
n°1 : 1011-411 - n°2 : 1011-360 - n°3 : 1011-361  
Siret : 490 550 670 00023 / APE 9001Z



## WIFI ACCES

Network : Le fil Guest

Password : @lefilguest

**1 Open space for production set with**

1 desk

Wifi & internet access

**1 Master dressing room 16,5 m<sup>2</sup> with**

2 washballs, mirror, toilettes, showers

Tables, couch, chairs, fridge

Locked code door

**3 Dressing room 9 m<sup>2</sup> with**

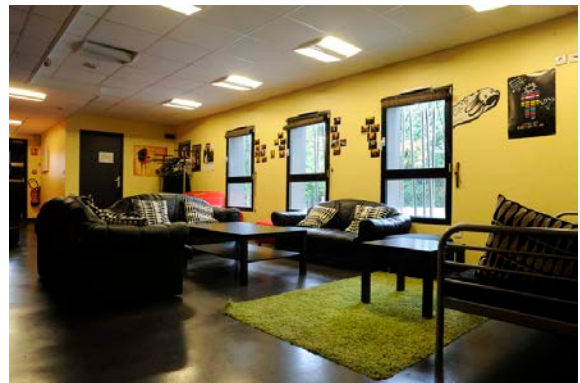
1 Wash ball, shower, couch, table, chairs, mirror, fridge

Locked code door

**1 Lobby with**

Couchs, chairs, tables

monitoring video - TV



**1 Catering**

24 Pax - TV



## Location

4

[www.le-fil.com](http://www.le-fil.com)

Licences entrepreneur du spectacle  
n°1 : 1011-411 - n°2 : 1011-360 - n°3 : 1011-361  
Siret : 490 550 670 00023 / APE 9001Z

20 Boulevard Thiers, 42000 Saint-Étienne  
Tél. 04 77 34 46 40 - Fax 04 77 01 05 41



<https://www.google.fr/maps/place/le+FIL/@45.4499391,4.3885355,17z/data=!3m1!4b!4m5!3m4!1s0x47f5ac0f66cd2107:0xc62a819c78387d!8m2!3d45.4499391!4d4.3907242>

Firefox Fichier Édition Affichage Historique Marque-pages Outils Fenêtre Aide

Boîte de réc Affectations Google Trad baie de scé Source Four AMBIANCE L changeurs DIAFORA, Chan pyramides Portfolio I M le FIL - C https://www.go

https://www.google.fr/maps/place/le+FIL/@45.4500712,4.3901346,17z/data=!4m5!3m4!1s0x47f5ac0f66cd2107:0xc62a819c78387d!8m2!3d45.4499391!4d4.3907242

Rechercher

Studio Ohnmibus Technique Bâti... Technique Mozilla Firefox Video Le Fil - Régie intrazik Lumière ProfiCulture : 1er... LE BAR CLUB - LE... LA GRANDE SALL...

le fil

le FIL

4,6 ★★★★★ - 35 avis

Salle de concert

Itinéraires

ENREGISTRER RECHERCHER À PROXIMITÉ ENVOYER VERS VOTRE TÉLÉPHONE PARTAGER

Salle de spectacle moderne gérée par une association qui programme des musiques actuelles et des rencontres. - Google

20 Boulevard Thiers, 42000 Saint-Étienne

le-fil.com

04 77 34 46 40

Suggérer une modification

Ajouter un libellé

33 photos

Satellite

le FIL

le FIL

le FIL

le FIL

le FIL

le FIL

Ajouter une photo

Données cartographiques ©2017 Google Conditions Envoyer des commentaires 50 m

5

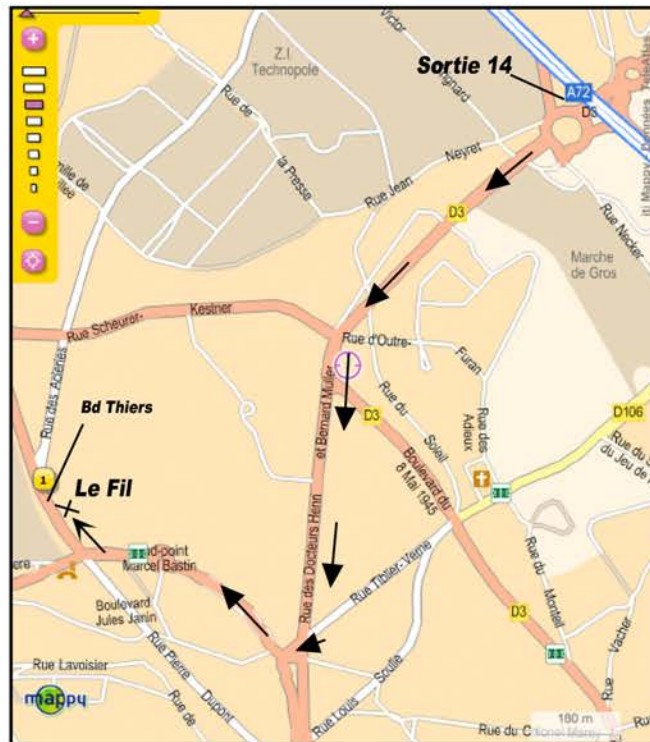
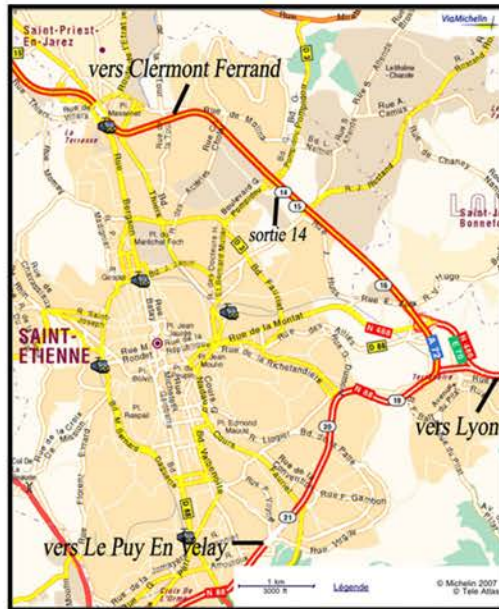
[www.le-fil.com](http://www.le-fil.com)

Licences entrepreneur du spectacle  
n°1 : 1011-411 - n°2 : 1011-360 - n°3 : 1011-361  
Siret : 490 550 670 00023 / APE 9001Z

20 Boulevard Thiers, 42000 Saint-Étienne  
Tél. 04 77 34 46 40 - Fax 04 77 01 05 41

## PLAN D'ACCÈS

*LE FIL - 20 BD THIERS - PLAINE ACHILLE - 42000 ST ETIENNE*  
*(GPS : à proximité du 4 rue des Acieries)*  
*A72 - sortie 14*



*NB : ne pas suivre le fléchage "Parking Fil" = parking public éloigné de la salle*